

17. Marshals' Notes

17.1 Introduction

Firstly, on behalf of myself, the Clerk of the Course and the Organising team, thank you for the help you are giving us on this event, without it, NHMC and other Clubs would be unable to run events of this type or indeed any form of motor sport.

We shall be running a marshals draw on the event with several cash prizes, the winners will be announced over the radio network. Prizes can be collected at the end of the event from Rally HQ; any not claimed will be posted, based upon the address given at sign-on

Finally, everyone is welcome to the awards presentation, which will be at the Range Stores (Range Entry Point Number 3).

Your job is to keep yourself and others safe on the stage. Safety at the event, and especially out on the live stages, is our main concern. Please ensure any vehicles are parked safely at least 30 metres away from the live stage

More experienced (**accredited**) marshals will be used in the appropriate places with buddying arrangements in place on the stage for new and less experienced marshals. Experienced marshals may be asked to buddy up with new marshals as part of their training.

This document serves as the marshals briefing.

Pre event preparation

Please check you have all the necessary equipment.

We will provide:

- All stage equipment (arrows, tape, solid barriers etc.)
- Clocks (For Control marshals only)
- Paperwork

You will need to bring:

- Tabards
- Your Motorsport UK Marshal Registration number or (if possible) evidence that you have completed on-line training (see below)
- Appropriate footwear (ideally with toe protection)
- Warm clothing, food, drinks, etc.

Marshal Training requirements

In accordance with the Motorsport UK Stage Rally Safety Requirements, all new marshals are required to register with Motorsport UK and complete the three on-line learning modules which relate to:

1. The Roles and Responsibilities of a marshal
2. Spectator Management
3. Incident Management.

Once these modules are complete they will be classed as an **accredited** marshal. You can then go on to progress through the marshals grading scheme.

We would encourage you to complete this once-only training which will take approximately 45 minutes.

Signing-on

On arrival at the venue please ensure you sign-on with the Chief Marshal using the current Motorsport UK form at the entrance to all stages (National Grid Reference NY 761155, off the A66 signposted "ENTRY No 3 for E ranges RV3" – continue through the barrier towards the stage start - do not turn into the Range Stores compound, do not block the entry to the Range Stores compound, do not stop on the A66) between 6:15 am & 7.00 am.

17.2 Spectators & Spectator Access Arrangements

Landmarc and the MoD/DOI will not permit spectators on to any areas of the Warcop Ranges used for the special stages.

Note that cars may not be parked on the A66.

- Be aware of the arrangements for media access.
- Do not take photographs or film or share any information on social media whilst marshalling.
- Stay alert at all times.
- Keep everyone off the live stage – use a whistle to alert about approaching cars.

NO-ONE IS ALLOWED TO STAND IN PROHIBITED AREAS AT ANY TIME – SPECTATORS, MARSHALS OR MEDIA.

These will be shown by red & white tape and include box junctions intended as run off areas for cars that fail to make a turn and generally the outside of bends. However, be aware that rally cars can leave the stage at any point. If you have concerns about safety on stage or spectators/media refuse to move from an unsafe location, make this known to the Stage Commander via the nearest radio operator. A decision will be taken on whether to suspend or stop a stage and you will be supported by the Stage Commander and Clerk of the Course in taking this action – we want to support a good competition but safety always comes first.

17.3 Programme

Each stage will run separately (not interposed) at 30 second intervals.

Before each pair of stages three vehicles will traverse the stage: the Motorsport UK Safety Delegate, a Spectator Safety Car (with warning lights and siren), and a ZERO car.

A sweeper car will close each pair of stages (that is after Stages 2, 4, and 6).

In addition, if there is a delay of more than 20 minutes of a competitor entering the stage a safety car will drive the stage warning personnel that the stage is about to restart.

17.4 Timing of the event

I have attached a time schedule which may change on the day.

17.5 Arrows/Signs

If you are positioned near stage arrows or boards, please keep a watchful eye on them in case they are knocked or blown down. Please ensure that barriers that are erected to block roads where competitors are not supposed to be are in position throughout the event, especially if demolished by a competitor.

17.6 Red Flag Procedure

Red flags are to be used to neutralise the competition (for example, where spectator safety is compromised, or to authorise the movement of non-competing or rescue vehicles prior to the stage being cleared of all competing vehicles). The red flags will only be displayed to competitors on stage on the instructions of the Clerk of the Course or the Stage Commander, via the Stage Commander or Rally Radio Control and it has been introduced for the safety and well-being of everyone involved in this event. Competitors must immediately and significantly reduce speed as well as being prepared to stop at any time; at no time must they overtake any safety vehicle they encounter on the special stage route. The driver must then follow the instructions of any marshals and/or stage safety personnel until leaving the special stage route.

17.7 Chicanes

These chicanes are built to slow the average speed of competitors, if they get damaged or demolished they should be re-built as quickly and as safely as possible. If you do not have enough manpower at your location, radio Control who will dispatch extra rally personnel to your location with assistance and equipment.

17.8 Radios

There will be radio contact (using the Motorsport UK Medical and Safety frequency) between the start and finish and at locations around the stage (see stage plans), each key location around the stage is marked with a location number. If you need to contact Control to report an incident, please make sure you quote the location number to the Radio Operator. Mandatory radio points are shown on the stage maps and in the Road Book, marked on stage by radio boards, and will have a red flag (except for start and finish radios). Supplementary radio points are not shown on the stage maps or in the Road Book, are not marked on stage by radio boards, and do not have a red flag.

The Organisers and stage builders, etc. will be using hand held radios on a separate frequency so will be in contact with each other at all times independently of the Motorsport UK Medical and Safety frequency.

17.9 Incident procedure

IF AN INCIDENT HAPPENS you should remember the following:

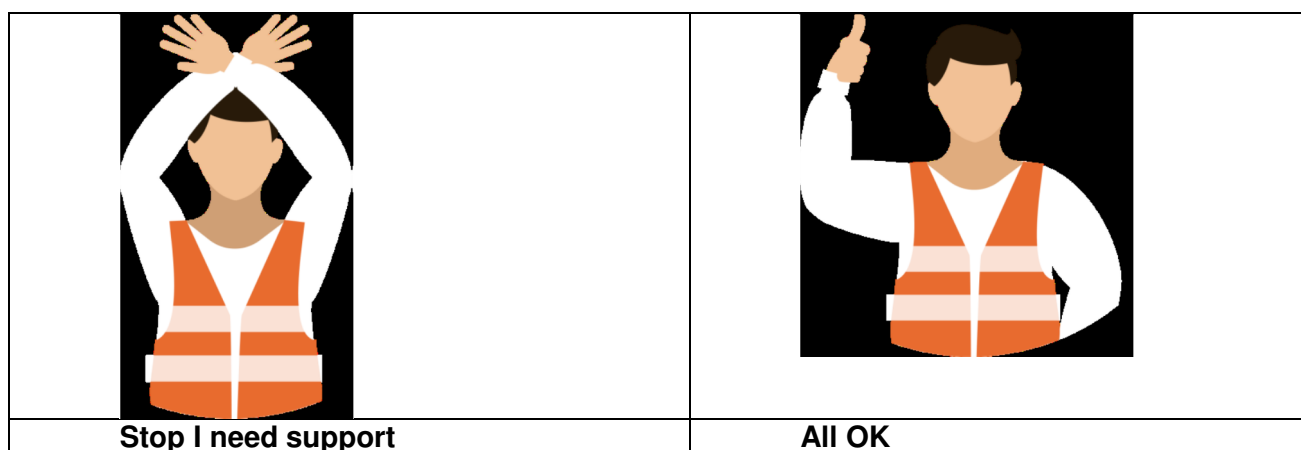
- Stay calm and assess the situation – your own safety is the first priority,
- Ensure anyone not involved in the incident is kept back – where there are several marshals, ensure that some remain to control onlookers,
- When an incident happens, a marshal’s primary responsibility is to act as a look out in order to allow another person to assess the needs of the competitor,
- If the incident has created a blockage or partial blockage and there are sufficient marshals on the stage, an additional marshal should go further up the stage to warn approaching cars,
- If the incident involves assisting competitors, firstly ensure that you have a lookout in place and that you are in a safe position. Ensure that the SOS/OK board carried by all competitors is being shown and that someone takes and displays the warning triangle approximately 100 metres down the stage. The SOS board should be shown at the vehicle itself if a competitor needs medical assistance,
- Report circumstances as quickly as possible to radio crew if nearby or stop the next competing car and ask them to report:
 - Car number,
 - Whether blocking stage,
 - Any medical assistance required,
 - Any other relevant information,
- Replace any damaged stage furniture and ensure stage is kept clear of spectators.

17.10 Stage changes after Stages 2 and 4.

This has to be done to satisfy current Motorsport UK Rules and Regulations. Control will inform all radios when to carry out the turn around. The equipment vehicles will do the bulk of the work but we would like you to help in any way you can at your location. Some arrows and signs will be erected prior to the start of the event and will be covered with a bin liner, these will be uncovered / covered by the equipment crews at the appropriate times.

17.11 Communicating with Safety Cars

If it is necessary to stop the safety car, the crossed arms FIA-specified gesture should be given.



Thank you very much for Marshalling and enjoy the event!

Any feedback you wish to provide will be welcomed after the event; it can then be included in our review meeting.

Carl Thompson, Chief Marshal

SPECTATE SAFELY!



ARI
NEEDS
YOU
TO

Be alert!

Always expect the unexpected

Stay at the designated spectator areas

Remember that in an accident anything can happen

Always follow the instructions of the marshals

Your safety – Your life

ONLY A SAFE RALLY IS A GOOD RALLY

#AriNeedsYou



motorsportuk.org

SPECTATE SAFELY!



LEAVE THE DRONE AT HOME!

#AriNeedsYou



motorsportuk.org/rallyfuture